

Achieving Level 3 Competencies in the Fourth Year Academic Year: 2008-09

As a fourth year medical student you can tailor your competency curriculum to meet your personal and professional goals. You have several options that will offer you opportunities to achieve the three DIFFERENT Level 3 competencies required for graduation. You should reflect carefully on which competencies you select. Regardless of the option you choose below, you must communicate to the appropriate clerkship director, elective director or competency director in advance your intent for achieving a Level 3 competency via the Electronic Competency Management System (ECMS). The Level 3 competencies are an avenue for you to explore particular areas of medicine that interest you or you feel are particularly important to further enhance your residency application.

Options in Achieving Level 3 Competencies:

Option 1: Required Fourth Year Clerkships or Electives Pre-Approved to Offer Level 3 Opportunities

Option 2: Create Your Own: Independent Special Projects

Option 1a) Required Fourth Year Clerkships

- a. Radiology
 1. Competency 1: Effective Communication
Contacts: Richard Gunderman, M.D.
rbgunder@iupui.edu
Ruth Patterson, clerkship coordinator
rfpatter@iupui.edu

- b. Emergency Medicine
 1. Competency 5: Self-Awareness, Self-Care and Personal Growth
 2. Competency 8: Problem Solving
Contacts: Butch Humbert, M.D.
ahumbert@iupui.edu
Jim Graber, clerkship coordinator
jamgrabe@iupui.edu

- c. Internal Medicine Sub-internship
 1. Competency 1: Effective Communication
Contacts: T. Robert Vu, M.D.
tvu@iupui.edu
Patty Neureiter, clerkship coordinator
pneureit@iupui.edu

1b) Approved Electives

Information on current pre-approved electives that offer a Level 3 opportunity is listed in the specific competency section of this guide. To review additional information on a specific elective, please visit the Elective Catalog available in ECMS at:

<http://meca.iusm.iu.edu/MSIS> or on the MSA website at
<http://msaa.iusm.iu.edu/StudentRecords/ElectiveBook/electives20082009.asp>

Option 2) Independent Special Projects

- a. At any time you may choose to design a special competency project. This avenue is highly encouraged and will allow you to carefully select competencies that will help you in residency programs as well as personal growth and development. The project may be completed within an existing elective or outside of the medical school curriculum. Examples of special projects completed by your peers have included: community projects, a play based on an ethical situation, published research, an educational website developed for a department, student group, etc.
- b. If you choose to design a special competency project, please use Option B: Independent Study when registering via ECMS. You must have approval by the appropriate Competency Director for your proposal prior to submitting your final project for review. Please follow the instructions on submitting an Independent Study Proposal on the ECMS website under Competency Information or in the ECMS User Guide (available at: <http://meca.iusm.iu.edu/Resources/ECMSStudentUserGuide.pdf>.)

Electronic Competency Management System (ECMS)

Registering Your Level 3 Competency

Go to <http://meca.iusm.iu.edu/MSIS>

Log in using your iupui.edu username and password

1.) View Level 3 Competencies

Review the list of elective courses and clerkships that have been approved for competency credit. Select options that offer competency activities of personal interest to you.

2.) Registration - REQUIRED

- Register to participate in at least three DIFFERENT Level 3 competency activities approved for a specific elective, clerkship or independent study.
- **You must register all of your competencies via ECMS.** Competency grades will not be submitted until you register first.

3.) Submit Proposals

- **OPTIONAL:** for independent study only. Submit a proposal describing the Independent Project you would like to complete to obtain your Level 3 competency achievement. Guidelines and a template for proposals are available under the Competency Information section of ECMS.

4.) Submit Final Projects - REQUIRED

- Submit your final elective course/clerkship/independent competency product for review.

Technical Support

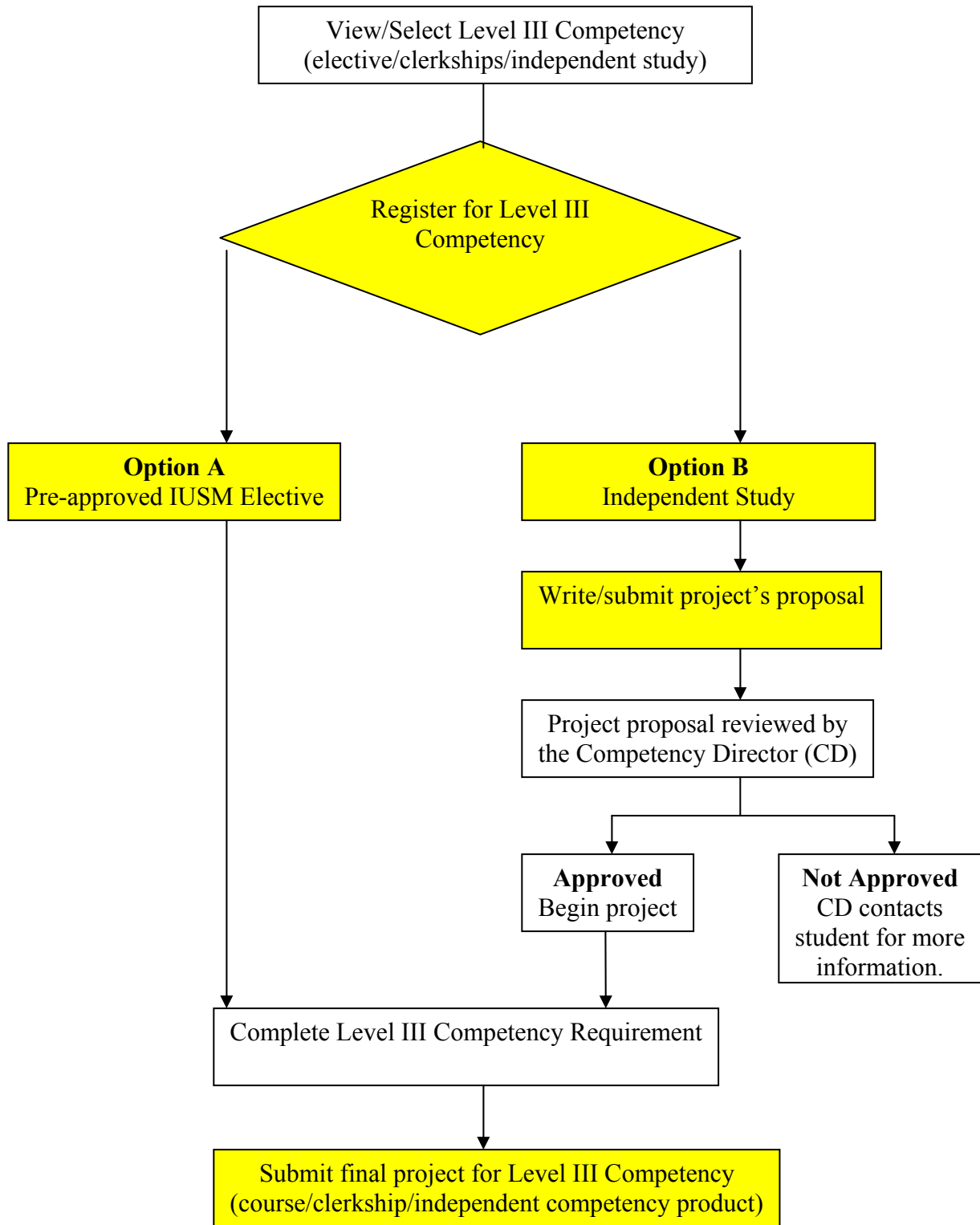
Please contact the Dean's Office for Medical Education and Curricular Affairs (MECA) at: (317) 274-4556 or via email at meca@iupui.edu should you experience any difficulties with ECMS or have questions about particular competency activities. Please note the contact sheet at the end of this document for specific individuals to call.

Frequently Asked Questions

For a listing of Frequently Asked Questions, please login to ECMS at <http://meca.iusm.iu.edu/MSIS> and select ECMS FAQs/Flowchart.

Student User's Guide

A Student User's Guide is available at: <http://meca.iusm.iu.edu/Resources/ECMSStudentUserGuide.pdf>.



Effective Communication

Students can accomplish Level 3 achievement in Communication through demonstration of advanced skills in patient-physician, collegial, or scholarly communication in any of the following ways:

- 1) Patient-Physician Communications
 - a) Completion of an approved senior elective in communication
Students may take clinical electives and achieve Level 3 in patient-physician communication by:
 - i) Studying their own communication with patients (through analysis of audio-taped encounters with patients; participant observation (observation and writing about the experience in a journal; or by patient debriefings (interviewing patients after an encounter)
 - ii) Evaluating their own communication by submitting a formal written assessment that describes their own strengths and weaknesses as a communicator, including a personal plan for improving their ability to discuss difficult issues with patients
 - iii) Analyzing their own interactions with patients, or others (patient-physician interaction, nonverbal communication, health care team, decision-making session), using communication theory as a framework of reference
 - iv) Improving ability to use interaction therapeutically for motivating or counseling patients, as assessed by patients (students will be given patient satisfaction scales for their patients' use)
- 2) Clinical Experience with Interviewing Intensive Evaluation
 - a) Any approved clinical elective in which the student's ability to communicate effectively at an advanced level is systematically, formally observed and evaluated by the faculty and patients, (a minimum of four encounters) and where the communication problems involve at least two of the following characteristics:
 - i) Patients with characteristics that pose a high degree of difficulty, such as impaired level of consciousness, hostility, anxiety, or severe speech or hearing impairments
 - ii) Interactions about emotionally charged subjects, including sexuality, death, chemical dependency, violence or abuse
 - iii) Therapeutic interviewing is performed very effectively as reflected in thoughtful use of silence, empathetic statements, appropriate use of reassurance, judicious suggestions, and careful interpretations
 - iv) Interactions involving more than one person in decision-making, including family meetings or situations where conflict resolution is crucial
- 3) Collegial and/or Scholarly Communication
 - a) Development and completion of a prospectively approved scholarly project examining an aspect of effective communication in medicine
(This would be undertaken by the student and an approved mentor from the communication competency subcommittee or a faculty designee; resulting in a paper or written report, including a substantial review of the literature.)
 - b) Submission of an authored or co-authored research or clinical paper for publication in a peer-reviewed journal. (This work must be done while the student is in medical school).
 - c) Submission of an authored or co-authored chapter for a medical textbook
 - d) Submission of a dissertation or competitive grant proposal
 - e) Presentation at a regional or national meeting
 - f) Presentation at departmental grand rounds presentation, if evaluation data are available

Pre-Approved Electives Offering a Level 3 in Effective Communication

Changes in the electives that offer a Level 3 in this competency may occur.
If changes are made, they will be brought to the attention of students as soon thereafter as possible.

The Level 3 Criteria listed identifies the requirements necessary to achieve a Level 3.
All Level 3 project requirements are approved by the elective course director AND the competency director.

Course #, Title, Course Director	Description and Level 3 Criteria	Location and Availability
93MI690 Internal Medicine Sub-Internship Vu, T. Robert	<p>Description: This core rotation is designed to provide students an experience that closely resembles the internship year. Students are assigned to inpatient Medicine teams that care for patients in the medical intensive care unit, the ward setting, or both. Students are given primary patient care responsibilities with a closely guided experience in decision-making and in diagnostic and therapeutic management of typical medical conditions related to general internal medicine and/or related subspecialties. Close supervision is provided by the team's resident and attending physician. Students will provide care to no more than 6 patients at a time and will take overnight calls with the team to admit new patients and cover their own patients. Overnight call <i>frequency</i> will depend on the rotation site, but a <i>total of 6</i> overnight calls for the month will be the minimum requirement. The primary method of teaching is active participation in patient care activities with daily teaching attending rounds; daily conferences and morning reports along with web-based case modules provide complementary educational venues. The course is a one month rotation.</p> <p>Level 3 Criteria: Please verify the criteria of your submission with the Clerkship Director prior to submitting your final project in ECMS.</p>	Wishard, VA Medical Center, IUMC, St. Vincent, Methodist, Muncie Ball Memorial Available all year.
93RA690 Radiology Core Rotation Gunderman, Richard	<p>Description: This month-long clerkship provides formal lectures, interactive sessions, hands-on clinical experiences, and web-based learning opportunities. Students have the option of taking call, and every student functions not only as a learner but also a teacher.</p> <p>Level 3 Criteria: Students work in groups to complete presentations and have the opportunity to demonstrate the Level III Competency in Effective Communication by preparing a 3-4 page paper.</p>	IUMC All months except December and May

<p>18CA701 Pathology- Emphasis in Hematopathology Roepke, Janet</p>	<p>Description: Students will be taught the clinical abnormalities and most of the laboratory techniques for diagnosing the common hematological disorders, including myelodysplasia, myeloproliferative disorders, leukemias, and lymphomas. This will be done by accompanying residents and staff on bone marrow procedures and by studying blood, bone marrow, and lymph node slides under the supervision of the attending staff and residents. The current workload includes 200 bone marrows and 40,000 CBC's annually. Flow cytometry testing, lymph node, fine needle aspirate, bone marrow, and peripheral blood specimens are also readily available.</p> <p>Level 3 Criteria: The learner may generate reports similar to pathology residents, present a topic of interest related to hematopathology, or submit a case study for publication if interested in level III competency</p>	<p>Ball Memorial Hospital (Muncie) Available all year.</p>
<p>18CA711 Pathology Elective Roepke, Janet</p>	<p>Description: Students will participate in the regular teaching activities of the Pathology Department, including daily lectures, demonstrations, and departmental meetings. After these general and basic meetings, the student may elect to spend most of their time in any one or more of the following major subdivisions of pathology for more specialized training and study: surgical pathology, autopsy pathology, clinical chemistry, hematology (special and routine), blood banking, microbiology, and cytology.</p> <p>Level 3 Criteria: At the conclusion of the elective, the learner will be able to describe and have an appreciation for the role of the pathologist and pathology in patient care (i.e., diagnosis, management, therapeutics, and prevention). The learner may also have presented a topic of interest related to one area of pathology or submitted a case study for publication, particularly if interested in level III competency.</p>	<p>Ball Memorial Hospital (Muncie) Available all year.</p>
<p>93EN710 Clinical Elective in Otolaryngology and Head & Neck Surgery Fritsch, Michael</p>	<p>Description: Students are assigned on an individual basis to multiple residents and faculty and accompany them to clinics, surgery and departmental didactic and patient conferences. A friendly rapport between students and the department furthers understanding. Call is not required.</p> <p>Level 3 Criteria: Level 3 credit objectives met by a quality presentation or written work along with completion of "the process" for that competency.</p>	<p>IUMC and Wishard Memorial Hospital Available all year</p>
<p>93K1700 Clinical and Laboratory Honors Program in Pediatrics Harris, Mitchell Alan</p>	<p>Description: The goal of this program is to provide students with an opportunity to assist in the design and implementation of a clinical or basic research protocol in collaboration with a pediatric faculty investigator. Students interested in being considered for this Honors Program are to contact Dr. Harris with a description of the project and the faculty member who will be supervising the program. Honors students will receive monthly reports of their performance and will receive a grade. On successful completion of the two or three month program, the student will be eligible for a certificate of honors in pediatrics.</p> <p>Level 3 Criteria: This award will be based on: (1) a research paper written by the student; and (2) an oral examination given by the faculty supervisor and other investigators.</p>	<p>IUMC Available all year</p>

<p>18MI1711 Ward Medicine Neal, J.M.</p>	<p>Description: This elective is designed to give the student experience normally gained in the internship year. The student will have diagnostic and patient care responsibilities supervised by the Ward Resident and Staff Physicians assigned to the ward. These responsibilities include history and physical examination, order writing, daily progress notes and observation and performance of a broad spectrum of diagnostic and therapeutic medical procedures. Daily didactic conferences and ample time for reading complement the above.</p> <p>Level 3 Criteria: a) single long or several short written case studies complete with literature search and discussion of pathophysiology of the condition b) complete PBL case with references, test results, ancillary studies c) minimum of 4 (one per week).</p>	<p>Ball Memorial Hospital (Muncie)</p> <p>Available all year</p>
<p>93MI1830 Geriatric Medicine Westmoreland, Glenda</p>	<p>Description: This elective will give the students experience in the health care of older adults that will be fundamental for adult medical and surgical residencies. Students will see both "well" older adults and those who have functional and cognitive disabilities in these venues. During their rotation, students will practice along side residents who are completing a one-month required geriatrics rotation and will be supervised by geriatricians. In addition to the clinical experiences, students will attend an interactive conference series that covers core geriatrics clinical topics including delirium and drug prescribing in older adults. There are no night call or weekend responsibilities for this elective.</p> <p>Level 3 Criteria: Student will be required to attend interdisciplinary team meetings, interacting with patients who the teams present and evaluating and analyzing their own communication with patients and team member. Students will present these analyses in writing to be reviewed by the geriatrician(s) who attended the team meetings.</p>	<p>Wishard Memorial (IUMC); VA Medical Center; Methodist Hospital</p> <p>Available all year</p>
<p>49MP714 Pulmonary/Critical Care Elective Weller, Robert</p>	<p>Description: This elective emphasizes diagnosis and management of critically ill patients with emphasis on medical and pulmonary diseases. The primary patient population are inpatients at a large tertiary care center with a diverse intensive care patient population (general surgery, trauma, cardiovascular critical care, and respiratory critical care). There will be exposure to pulmonary procedures, critical care procedures, and ventilator management. Hands on closely supervised pulmonary ICU procedures will include Swan Ganz catheterization, central line and arterial line placement, thoracentesis, and some types of intubation.</p> <p>Level 3 Criteria: Communication in the intensive care unit is frequently with family members rather than the patient. Families receive communication from doctors, nurses and chaplins, as well as other members of the care team. Student is expected to study these communications by tape recording (with permission) the daily updates from MDs and RNs to family members of critically ill patients including initial interviews, proxy consents for procedures, level of care discussions and end of life issues. Student will then conduct follow up interviews with family members several days later to determine what impact the communications had. The student will then tape his own ICI-family member discussion session. Submittal paper to ICU faculty member and competency resource MD will address effective and counter-productive techniques.</p>	<p>Methodist Hosp (Indpls)</p> <p>Available all year</p>

<p>49MX714 General Internal Medicine, Office Practice Frick, Fred</p>	<p>Description: The experience is in an internal medicine office practice. There is heavy exposure to diabetes mellitus (all types), hyperlipidemias and hypertension. The natural history of illnesses and the longitudinal care of patients will be emphasized. The student will regularly see patients with multiple diagnoses and complex pharmacologic regimens. In addition to patient contact and teaching, the student will receive regular one-on-one didactic sessions and will regularly receive literature assignments.</p> <p>Level 3 Criteria: The student will be personally interviewing and examining patients from a variety of ethnic and racial backgrounds. Virtually all clinical problems encountered in a primary care internal medicine practice will be seen. In this activity, the student will need to demonstrate interview techniques, listening ability, and interaction with patients, in addition to clinical knowledge and insight.</p>	<p>Methodist Hospital and Methodist Professional Center (Indpls)</p> <p>Available all year</p>
<p>93SG780 Surgical Research Program Howard, Thomas</p>	<p>Description: This elective course is for students interested in exploring surgical research as a means for broadening their educational experience, supporting their application to general surgery training programs, or as a start toward a career in academic surgery. The course can be tailored to the student's interests and aptitudes. There is ample opportunity for operative experience opening and closing abdomens, practicing suturing techniques, participating in perioperative patient management, i.e. central lines, arterial lines; or students may opt to use the time on this rotation to explore a clinical research project of their choosing.</p> <p>Level 3 Criteria: Student will be expected to present history and physical findings, X ray data, and laboratory data at least once to our multidisciplinary imaging conference and this will represent 10% of student's grade. 25 question objective exam based on standardized reading/case records (60% grade). The Course Director will grade 30% subjectively on clinical skill acquisition.</p>	<p>IUMC (Emerson Hall)</p> <p>Available all year</p>
<p>93SG860 Surgical Research Schmidt, C.M.</p>	<p>Description: This rotation exposes the medical student to ongoing bench, translational and clinical research projects in the Department of Surgery. The research focus of each lab will vary among investigators. The research may involve in-vitro, in-vivo, as well as human clinical trial and retrospective case review models. The student may be exposed to and perform basic biochemical techniques including ELISA, Western Blot, etc. In addition, after appropriate training, the student may participate in animal studies which may involve surgical procedures.</p> <p>Level 3 Criteria: Students fulfill effective communication competency by individually preparing a manuscript of publication quality that may be submitted to a peer-reviewed journal. The paper will be based on the research pursued during the elective and may include collaborative work from co-investigators.</p>	<p>Indiana University Medical Center</p> <p>Available all year</p>

<p>93VA720 Dermatopathology Billings, S.</p>	<p>Description: This elective is designed to provide the student who is interested in a career in dermatology and pathology with an in-depth experience in the pathology of the skin. During the month the student will participate in daily sign out, attend weekly Dermatopathology conferences, and correlate clinical and pathologic findings at the weekly Dermatology Grand Rounds and on the dermatology consultation service where appropriate.</p> <p>Level 3 Criteria: Please contact the elective course director for requirements.</p>	<p>University Hosp (IUMC)</p> <p>Available all year</p>
<p>49YF704 Family Medicine-Hospitalist Service Tiffault, R.</p>	<p>Description: This elective is designed to expose 4th Year Medical Students to all aspects of hospital care. Students will work along with the Family Medicine Resident on Duty for the Family Medicine Hospitalist Service and triage, admit, diagnose, present, and manage Obstetrical, Pediatric, Adult, and Geriatric patients from the Emergency Room, the Family Practice Center, the community physician offices, and other services at Methodist Hospital. They will be expected to manage and follow patients assigned to them on the Med-Surg floors, Pediatric floors, Labor & Delivery and Postpartum floor, and Critical Care floors, along side the Family Medicine Interns and under the supervision of the senior Family Medicine resident and faculty. Students will attend Family Medicine Didactics sessions with the residents on Thursday afternoons. Students are expected to spend 3 night calls and 2 weekends with the service during the month.</p> <p>Level 3 Criteria: By the end of the rotation, students are expected to be able to recognize conditions which require outpatient care, admission, consultation, and referral; diagnose and treat common inpatient conditions based on the latest evidence; identify psychosocial issues which impact the care of hospitalizes patients; and communicate effectively with patients and other members of the health care team.</p>	<p>Clarian Methodist Hospital (Indianapolis)</p> <p>All year except July</p>
<p>49YF724 Ambulatory Care Family Medicine Tiffault, R.</p>	<p>Description: This elective is designed to expose 3rd or 4th Year Medical Students to all aspects of patient care outside the hospital. Students will work with some of faculty members the Family Medicine Program. The students will learns how to do the focused history and physical, and how to diagnosis, treat, and manage Obstetrical, Pediatric, Adult, and Geriatric patients in the outpatient setting with variety of common acute and chronic injuries and/or illnesses such as gestational diabetes, a infant with a fever, asthma, fractures, wound care, malignant hypertension, COPD, CHF, and osteoporosis just to name a few. Students will attend Family Medicine Didactics sessions with the residents on Thursday afternoons.</p> <p>Level 3 Criteria: The following family physician roles will be demonstrated: a) clinical care, b) community medicine role c) coordination role. The student will be exposed to outpatient procedures. The student's participation in procedures will be determined by the student's experience and training. The student is supervised by G-3 Family Practice residents and practicing Family physicians and learns the focused history and physical exam common to ambulatory care. The student sees patients and forms a differential and then proposes treatment to the supervising resident or physician. Both of them explain the diagnosis and management to the patient and start treatment and patient education. After the patient leaves, the student</p>	<p>Clarian Hospitals & Clinics (Indpls)</p> <p>All year except July</p>

	dictates the patient's clinical record. Required weekly conferences are presented in the Family Practice Center and include Grand Rounds	
71YF723 Sports Medicine Lavallee, M.	<p>Description: Outpatient Sports Medicine- Exposure to High School, Collegiate Recreational Athletes. Weekly didactic lectures, weekly interesting case conferences. Weekly Training Room, casting clinic, work with physical therapists, exercise physiologist. Exposure to Sports Medicine physicians and fellows. Learn numerous procedures – casting, injections, treadmills, orthotics, etc</p> <p>Level 3 Criteria: Students who wish to accomplish a Level 3 competency rating will complete a literature review and construct a one-page "peer education" document that will be posted for students and residents and that will assist them in learning about a clinical problem or entity.</p>	<p>Sports Medicine Institute/ Memorial Hospital of South Bend</p> <p>Available all year</p>
49YX702 Ambulatory Care in a Family Practice Center Burtea, E. Diane	<p>Description: Working with residency program faculty and residents, students will obtain experience and expertise efficiently evaluating patients of all ages in the outpatient setting. They will demonstrate the basic knowledge, skills, and attitudes of ambulatory care in a family medicine office. They will be able to generate a differential diagnosis and initial treatment plan and/or plan for further evaluation. Preventive health maintenance will also be emphasized. In addition, the student will have opportunity to see patients in other ambulatory centers (prenatal and pediatric) by arrangement with the course director. Arrangements for Level 3 competency completion must be agreed upon with the course director on the first day of the elective rotation</p> <p>Level 3 Criteria: Student will be evaluated based on written assessment of Evaluations for Effective Communication: four level 3 Likert Scale Effective Communication Evaluation Forms will be filled out by faculty based on observed clinic style</p>	<p>Community Hospital (Indianapolis)</p> <p>Available all year</p>
49YX704 Ambulatory Care with a Family Physician Tiffault, R.	<p>Description: This elective is designed to expose 3rd or 4th Year Medical Students to the exciting field of Traditional Family Medicine; inpatient, outpatient, and obstetrical care. They will be expected to manage and follow patients assigned to them on the Med-Surg floors, Pediatric floors, Labor & Delivery and Postpartum floor, and Critical Care floors, along side the Family Medicine Interns and under the supervision of the senior Family Medicine resident and faculty. There the students will learn how to do the focused history and physical, and how to diagnosis, treat, and manage in the outpatient setting a variety of common acute and chronic injuries and/or illnesses such as gestational diabetes, a infant with a fever, asthma, fractures, wound care, malignant hypertension, COPD, CHF, and osteoporosis just to name a few.</p> <p>Level 3 Criteria: The student sees patients, forms a differential, and proposes a treatment plan. Under supervision, appropriate treatment is started along with a proper patient education. After the patient is dismissed, the student dictates the patient's record. The student is exposed to such</p>	<p>IU Methodist Family Practice Center (Indianapolis)</p> <p>Available all year except July</p>

	<p>outpatient procedures as outpatient surgery, aspiration and injection of the musculoskeletal system, colposcopy, spirometry, tympanometry, office gynecology, etc. The student's participation in these procedures varies according to the senior's experience and knowledge. Required weekly conferences are presented on site in the Family Practice Center and include Grand Rounds</p>	
<p>93YX710 Care for the Underserved Sevilla, Javier</p>	<p>Description: This elective provides medical students and residents an opportunity to gain experience in caring for underserved populations at well established community health centers. A majority of these clinics are located in inner city Indianapolis where a large number of working poor, minorities, and limited English proficiency people live. The month long experience will emphasize high quality of care for underserved populations, cultural competence, and medical Spanish utilizing clinical experience in a full spectrum Family Medicine practice in a community health center setting.</p> <p>Level 3 Criteria: Student will observe and conduct medical encounters. Students who elect level 3 credit in communication will be required to complete a 3-4 page paper including self analysis of communication strengths and opportunities for improvement based on evaluations collected during presentations (final presentation or smoking cessation program). Student will have assigned time to work on a small research project related to care for underserved populations in general or with particular focus on Hispanic/Latino health issues. Also student will be given the opportunity to refine their medical Spanish with materials provided at the beginning of the elective. Students will have the opportunity to direct patient-physician interaction in Spanish.</p>	<p>Various communities in Indianapolis</p> <p>Available Sept, Nov, March, and May</p>
<p>93ZB700 MD/MBA Physician-Leaders Forum McDonald, Robert</p>	<p>Description: Participants will become accustomed to working as a member of a team made up of fellow MD/MBA students and Physician-Leaders from the Indianapolis area. Students will become familiar with pertinent local and national issues in health care and the skills used to approach these issues. Participants will produce materials suitable for publication. Students will participate in team-consulting projects where they will apply their training in real-world scenarios.</p> <p>Level 3 Criteria: 4th year student enrolled in the 2 year, MD/MBA combined degree program will participate in the Physician-Leader Forum, as Student Members. Quarter, annual meetings will be held, and students will be required to attend them unless their enrollment in an out-of-town elective or clinical responsibilities prohibit their attendance at a meeting. Topics for discussion are assigned for each meeting, and it will be the students' responsibility to research the topics, provide articles to the Physician-Leaders at least 4 weeks prior to the meeting and present the topic for discussion at the meeting. The student members and Physician-Leaders will participate in the discussion/debate of each topic and will reach a consensus by the end of the meeting. Following the meeting, students will develop a white paper which will introduce the topic, summarize the discussion and report on the consensus of the group. The white paper will be presented at the following meeting where it will be voted on. One student will take the lead role for each topic and will be responsible for researching, disbursing articles, presenting topic at the</p>	<p>Various sites throughout Indianapolis, both on and off campus</p> <p>MD/MBA Students will participate throughout the 2-year time period made up of the fourth and fifth years of the joint degree program</p>

	meeting, and writing the white paper. Student-leaders, for discussion topics, will be evaluated using the Likert Level 3 for Effective Communication. The student will be evaluated by all Forum members including peers (MD/MBA students) and the Physician Leaders. The Course Director will assign the final competency grade.	
93ZH830 Enhancing Health Care to Diverse Communities Stelzner, Sarah	<p>Description: 1) Participants will gain knowledge of disparities in health care access and health outcomes faced by Hispanics and the importance of eliminating these disparities, 2) Participants will understand practical models of cross-cultural encounters , 3) Participants will increase their knowledge of Hispanic cultural and health practices, 4) Participants will learn how to determine the individual patient's and family's social context , 5) Participants will engage in clinical services and advocacy organizations based within the Clarian Health System and within the community, 6) Participants will utilize this experience to provide better care for patients in Indianapolis from different social and cultural backgrounds.</p> <p>Level 3 Criteria: The students participate in a multidisciplinary presentation and discussion about a variety of topics in the month. Each Wednesday evening, dental, nursing and medical students meet with a different speaker and facilitated discussion director. The topics are: Structured orientation to identify learners relevant goals needs and interests and identify effective strategies to address these-Multidisciplinary Faculty. Students also work with health care providers in a variety of community settings as well as complete a walking tour of the community and attend a variety of community outreach endeavors such as dental sealants, car safety instruction, etc.</p>	Wishard Hospital November only
93ZM710 Biomedical Literature and Critical Thinking: Researching and Writing Brahmi, Frances	<p>Description: At the end of this elective, the student will be able to critically appraise medical websites according to an established set of criteria and be able to search, synthesize, and evaluate articles from the medical literature (MEDLINE, www). The student will demonstrate his/her ability by writing a paper, which includes both Web and MEDLINE citations on a topic of his/her choice. In addition, the student will include an in-depth evaluation of a selected website. Presence at the orientation meeting is required, check the Calendar on the Angel website for place, date, and time of meetings. See https://daly.medicine.iu.edu/med/frameIndex.htm.</p> <p>Level 3 Criteria: For Effective Communication: collegial/scholarly communication</p>	Ruth Lilly Medical Library Sept-May

Basic Clinical Skills

For many of the examples given below for Level 3 in Basic Clinical Skills, the student must show current Basic Life Support Certification as a prerequisite.

The student must complete one of the following workshops or electives and provide certificate and/or documentation of satisfactory completion of:

- 1) Advanced Trauma Life Support Course, or
- 2) Pediatric Advanced Life Support Course, or
- 3) Microvascular Course, or
- 4) Virtual Reality Surgical Clinical Skills Workshop
 - a. Virtual Bronchoscopy
 - b. Colonoscopy
 - c. Advanced Suture and Knot Tying Skills
 - d. Laparoscopic Skills
 - e. F.A.S.T. Ultrasound Exam Workshop
- 5) A fourth year elective that meets high standards for clinical skills education and evaluation and **has been approved** by the Basic Clinical Skills competency director. Examples of electives that might qualify include:
 - a. Cardiology
 - b. Critical Care
 - c. Pediatric Therapeutics
 - d. Neurology
 - e. Emergency Medicine
 - f. Neurosurgery
 - g. Adult/Pediatric Anesthesia
 - h. Pediatric Pathology
 - i. Sports Medicine

Pre-Approved Electives Offering a Level 3 in Basic Clinical Skills

Changes in the electives that offer a Level 3 in this competency may occur.
If changes are made, they will be brought to the attention of students as soon thereafter as possible.

The Level 3 Criteria listed identifies the requirements necessary to achieve a Level 3.
All Level 3 project requirements are approved by the elective course director AND the competency director.

Course #, Title, Course Director	Description and Level 3 Criteria	Location and Availability
93AK700 Pediatric Anesthesia Emhardt, John	<p>Description: Students will gain operating room experience in all types of anesthesia limited to pediatric patients. The operating room experience will be supplemented by departmental conferences and lectures. More detailed information concerning this elective can be obtained by contacting Dr. Emhardt</p> <p>Level 3 Criteria: The student shall complete a written essay not shorter than 500 words in length. The topic should be chosen in conjunction with the student's mentor (usually the director at the hospital where the student performed the elective). The essay will be reviewed by the student mentor and graded on a pass-fail basis. The essay will be included with the competency grade form and sent back to the Basic Clinical Skills competency director. Students will gain operating room experience in all types of anesthesia limited to pediatric patients. The operating room experience will be supplemented by departmental conferences and lectures. The student will be expected to satisfactorily complete the task list for level 3 Basic Clinical Skills on Anesthesiology Electives which will be provided.</p>	Riley Hospital (IUMC) Available all year except December
93AN710 Adult Anesthesia Emhardt, John	<p>Description: Operating Room experience in all types of anesthesia will be provided in this elective. The practical training and experience will be complemented by lectures and departmental conferences. Detailed information about this elective is available at the departmental chairman's office. Assignment to specific teaching hospitals will be arranged by the course director following the senior elective matching program. Riley Hospital can be utilized if necessary</p> <p>Level 3 Criteria: The student shall complete a written essay not shorter than 500 words in length. The topic should be chosen in conjunction with the student's mentor (usually the director at the hospital where the student performed the elective). The paper should include references from a variety of sources. Topics should address a clinical issue, preferably a debatable one. The essay will be reviewed by the student mentor and graded on a pass-fail basis. The essay will be included with the competency grade form and sent to the Basic Clinical Skills competency director</p>	IU Hosp., VA Hosp., Wishard Memorial Hospital (IUMC) Available all year except December

